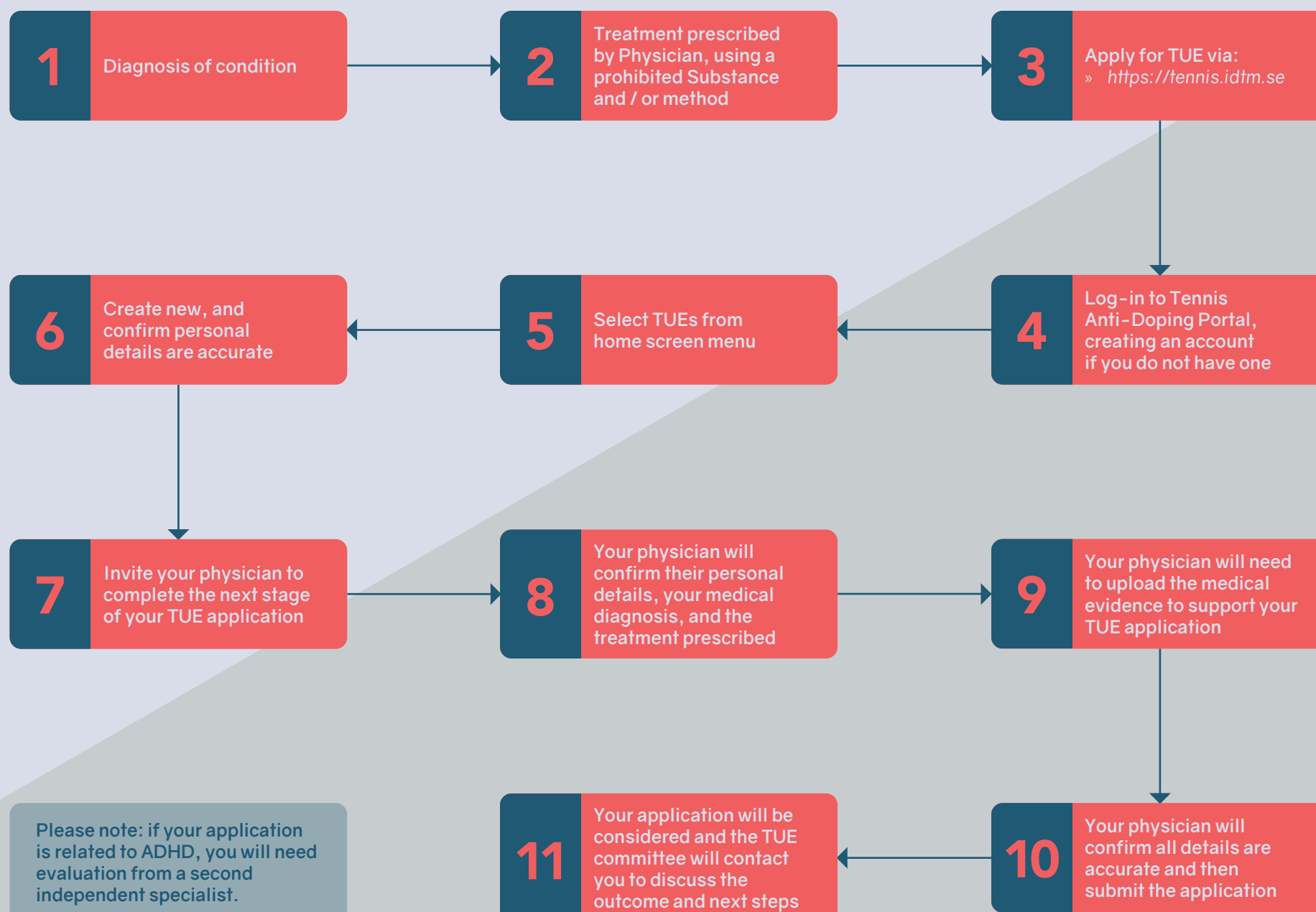


THERAPEUTIC USE EXEMPTION (TUE) APPLICATION GUIDE



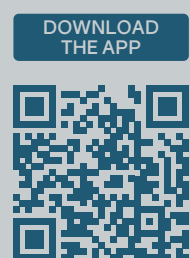
This step-by-step guide is to help players and their physicians when applying for a TUE.

What is the process, from diagnosis and prescription to apply for a TUE?



Please note: if your application is related to ADHD, you will need evaluation from a second independent specialist.
This is a requirement specific to the Tennis Anti-Doping Programme.

Please contact the ITIA for further assistance or to ask any questions about the TADP, the Prohibited List or the TUE process.



Tennis you can trust.

PROTECT THE SPORT
Make the right call - if you are worried that corruption or doping may be taking place, share your concerns with us.



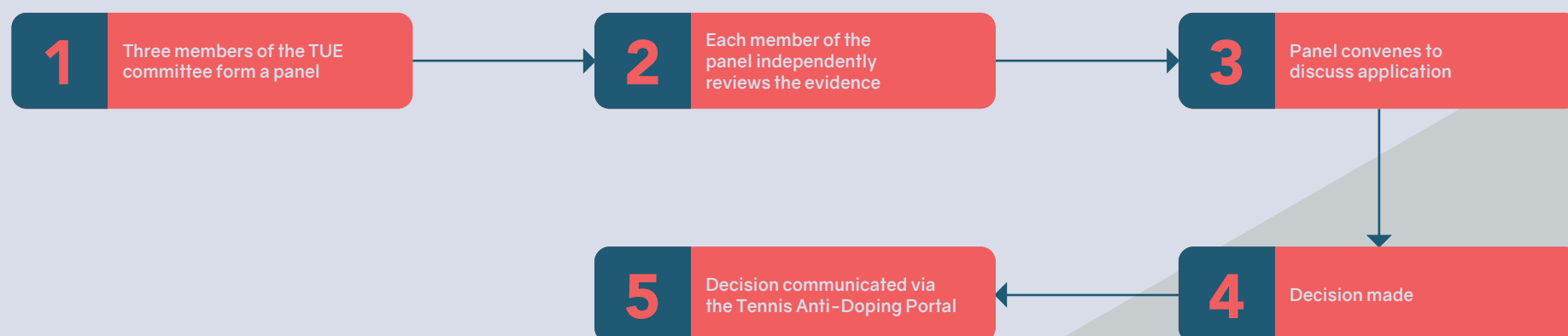
THERAPEUTIC USE EXEMPTION (TUE) DECISION PROCESS



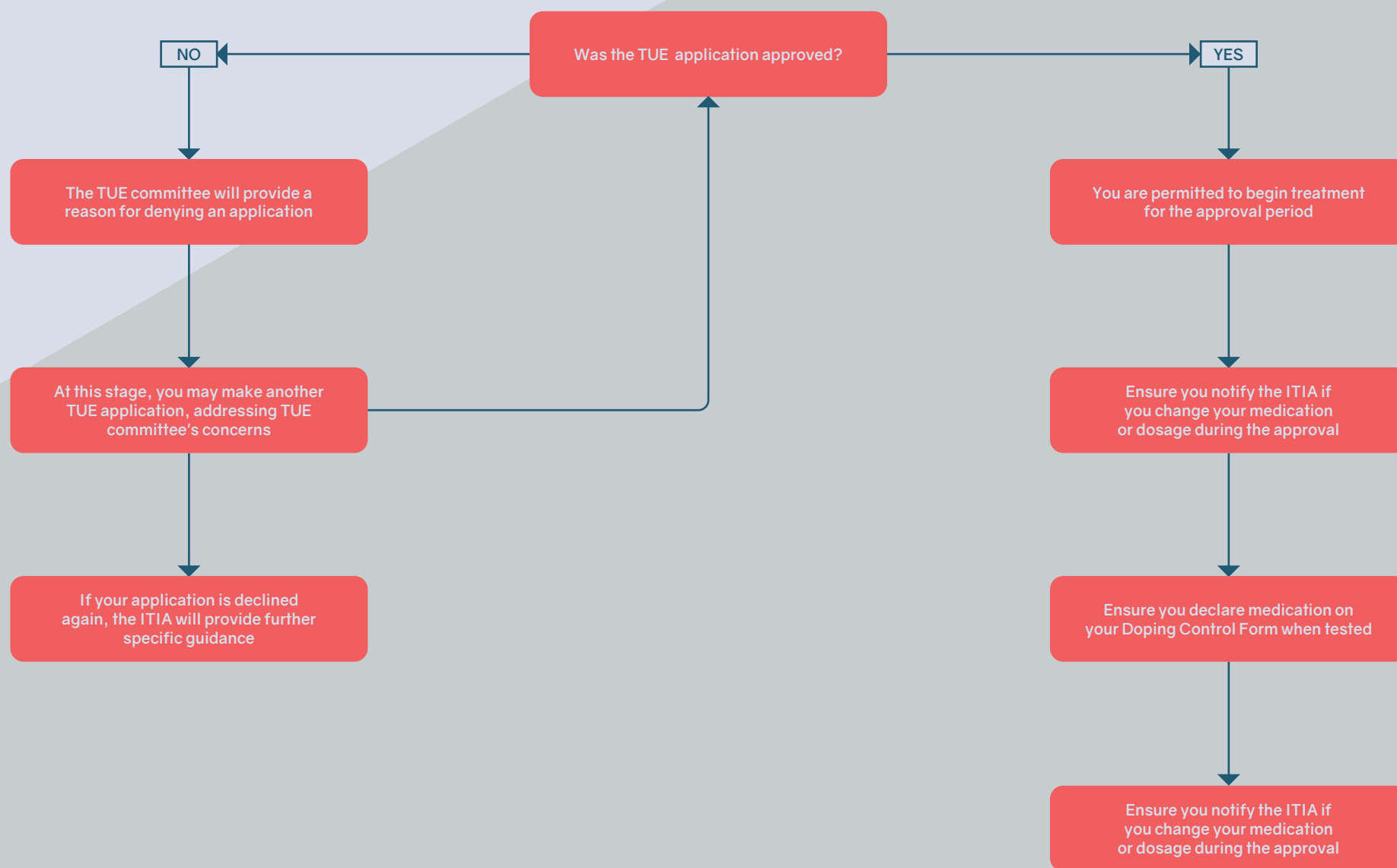
This step-by-step guide is to help players and their physicians when applying for a TUE

What happens once the independent TUE Committee makes its decision?

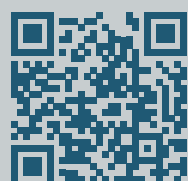
Stage One: The independent TUE Committee reviews an application



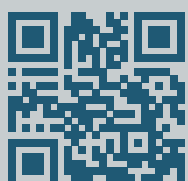
Stage Two: What happens once the independent TUE Committee makes its decision?



DOWNLOAD THE APP



SCAN FOR TADP PORTAL



Please contact the ITIA for further assistance or to ask any questions about the TADP, the Prohibited List or the TUE process.

WWW.ITIA.TENNIS



Tennis you can trust.